

## We See The World Like You See The World

### OUR HISTORY

Hank Porter founded All Weather Architectural Aluminum in 1969. From the beginning, the Porter family emphasized manufacturing the highest quality products and providing superior customer service.

Now, managed by the 3rd generation of Porters, those original ideals are still the touchstone of the business.

Over the decades All Weather's ability to provide creative solutions to challenging projects has been the company's greatest strength and continues to set All Weather apart from the competition.

Thank you for considering All Weather for your high end residential and commercial window and door needs.

We look forward to adding to the beauty and quality of your building project!

### OUR MISSION

We enhance how people experience the world around them through exceptional custom windows and doors.

### OUR VALUES

#### Excellence

We achieve superior results by aspiring to be the best at what we do.

#### Empowerment

We inspire individuals to have the drive and resourcefulness to effect positive change.

#### Respect

We treat everyone with common human decency.

#### Integrity

We always do the right thing, even when no one is watching.

#### Accountability

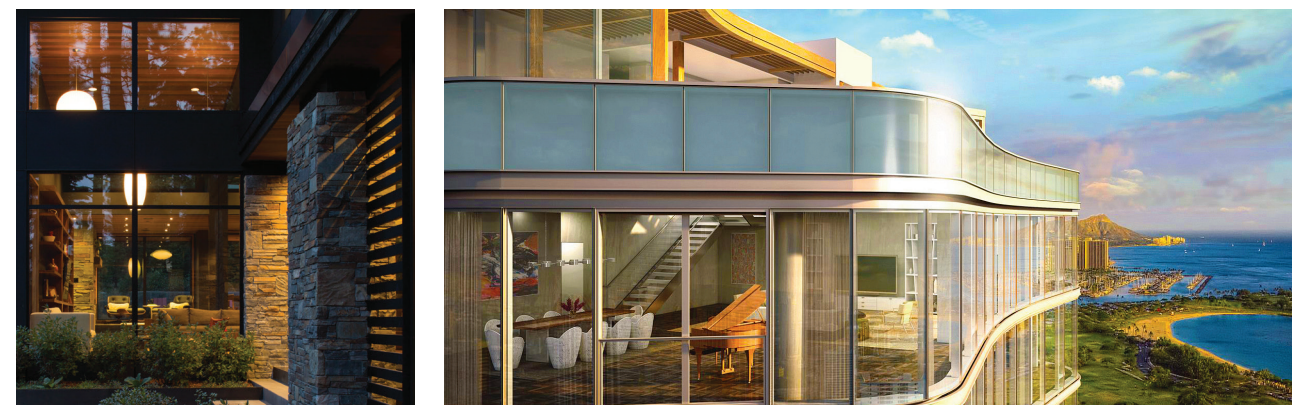
We own our actions and the impact they have on others.

#### Customer Service

We actively listen to our customers and strive to exceed their expectations.



## Enhancing How You Experience The World Around You





# SERIES 3000

OUR MOST VERSATILE WINDOW



- FEATURES
- | Narrow site lines
  - | 1 5/8" Frame
  - | Mitered & Welded Corners
  - | Glazing Options:
    - 1/4", 3/8", 1/2", 15/16" OA
  - | Fixed, Casement, Awning, & Hopper
- RATINGS & CERTIFICATIONS
- | Rated Commercial 30 (C30)
  - | Acoustically Rated
  - | NFRC Certified
- FINISH OPTIONS
- | Clear Anodized Class I
  - | Bronze Anodized Class I
  - | Custom Paint (70% Kynar)

# SERIES 5000

OUR MOST COST EFFECTIVE THERMALLY BROKEN WINDOW



- FEATURES
- | 2 1/4" Frame, Mitered Corners
  - | Pour &
  - | Fixed, Casement, Awning, & Hopper
  - | Outside Glazed
- RATINGS & CERTIFICATIONS
- | Rated Commercial 50 (C50)
  - | Acoustically Rated
  - | NFRC Certified
- FINISH OPTIONS
- | Clear Anodized Class I
  - | Bronze Anodized Class I
  - | Custom Paint (70% Kynar)

# SERIES 6000

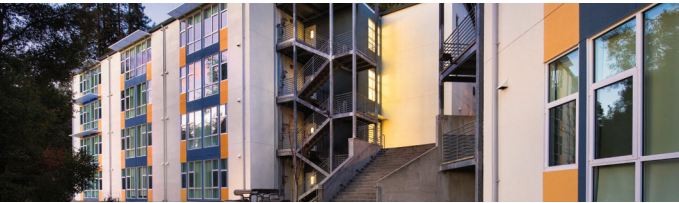
OUR MOST ENERGY EFFICIENT OUTSIDE GLAZED WINDOW



- FEATURES
- | 2 1/2" Frame, Mitered Corners
  - | Thermal Strut
  - | Fixed, Casement, & Awning
  - | Triple Glazed Option
- RATINGS & CERTIFICATIONS
- | Architecturally Rated 100 (AW100)
  - | Acoustically Rated
  - | NFRC Certified
- FINISH OPTIONS
- | Clear Anodized Class I
  - | Bronze Anodized Class I
  - | Custom Paint (70% Kynar)
  - | Two-Tone

# SERIES 6500

OUR MOST ENERGY EFFICIENT INSIDE GLAZED WINDOW



- FEATURES
- | 2 1/2" Frame, Mitered Corners
  - | Thermal Strut
  - | Fixed, Casement, & Awning
  - | Triple Glazed Option
- RATINGS & CERTIFICATIONS
- | Architecturally Rated 100 (AW100)
  - | Acoustically Rated
  - | NFRC Certified
- FINISH OPTIONS
- | Clear Anodized Class I
  - | Bronze Anodized Class I
  - | Custom Paint (70% Kynar)
  - | Two-Tone

# SERIES 7000

ELEGANT & ULTRA SECURE SWING DOORS



- FEATURES
- | Swing Door
  - | 3 1/4" Frame
  - | European Design
  - | Mitered Corners
  - | Thermal Strut
  - | Triple Glazed Option
  - | Low Profile or Standard Sill
  - | Multiple Light Configurations
  - | Rigid Corner Key Frame
  - | Multipoint Locking System
- FINISH OPTIONS
- | Clear Anodized Class I
  - | Bronze Anodized Class I
  - | Custom Paint (70% Kynar)
  - | Two-Tone

# SERIES 8000

BREATHTAKING SLIDING DOORS



- FEATURES
- | Multi Slide Door System
  - | Up To 8 Large Panels
  - | 4 15/16" Frame Depth
  - | Multiple Thermal Breaks
  - | Enhanced Noise Reduction
  - | Marine Glazed
  - | Dual Weather Stripping
  - | True-Divided Lite Available
- FINISH OPTIONS
- | Clear Anodized Class I
  - | Bronze Anodized Class I
  - | Custom Paint (70% Kynar)
  - | Two-Tone

# SERIES 8100

THE ULTIMATE SLIDING DOOR | COMING SOON!



- FEATURES
- | Multi Slide Door System
  - | Virtually Unlimited Configurations
  - | 4" Frame Depth (2 track configuration)
  - | Pocket Option
  - | 90 degree Corner Option
  - | Low Profile Sill 3/4"
  - | Panels up to 7' x 12'
  - | Simulated Divided Lite Option
  - | Multiple "Smooth Glide" Roller Options
- FINISH OPTIONS
- | Clear Anodized Class I
  - | Bronze Anodized Class I
  - | Custom Paint (70% Kynar)
  - | Two-Tone

# SERIES 9100

BI-FOLD DOOR SYSTEM



- FEATURES
- | Bi-Fold Door System
  - | 4 1/2" Frame Depth
  - | Up to 16 Panels (max 8 in 1 direction)
  - | Multi-Point Locking System
  - | Recessed Floor Track Option (Flush Sill)
  - | Panel Size up to 3' 3" x 12'
  - | Hurricane Tested Glazing Option
  - | Window Sizes Available
- FINISH OPTIONS
- | Clear Anodized Class I
  - | Bronze Anodized Class I
  - | Custom Paint (70% Kynar)
  - | Two-Tone