



ALL WEATHER  
ARCHITECTURAL ALUMINUM

## SERIES 6100 WINDOW SYSTEM

777 Aldridge Road | Vacaville, CA 95688 | 800.680.5800 | [www.allweatheraa.com](http://www.allweatheraa.com)

# SERIES 6100

## 3 ¾" THERMALLY OPTIMIZED WINDOW SYSTEM

The Series 6100 Window System is All Weather's newest, most optimized, energy efficient window design. The 6100 is All Weather's first window system engineered to meet Title 24 compliance using the Prescriptive Method.

The all-new aluminum extrusion design provides a contemporary aesthetic and utilizes All Weather's state-of-the-art insulated glass production capabilities. The Series 6100 delivers best-in-class energy efficiency and is the perfect choice for residential applications and exterior glazed solutions for buildings 12 stories and under.

### FEATURES

- 3 ¾" Frame with mitered corners
- Fixed, casement, awning & combination configurations
- Max casement size of 48" x 96"
- Max fixed lite size 60 square feet
- Thermally broken frame – Thermal strut system
- Concealed hinges for contemporary aesthetic

### FRAME OPTIONS

- Nail On

### GLAZING OPTIONS

- 1" OA insulated glass units – 1 ¼" OA triple glazed
- 1" Simulated Divided Lite (SDL) – Flat Bar
- 3 ⅞" True Divided Lite (TDL)

### RESIDENTIAL HARDWARE OPTION

- Encore Contemporary handle
- Amesbury Truth High Performance Single Arm Operator
- Max casement width 42" and min casement width 23 ½"
- Max casement height 72" when width is greater than 30"
- Max casement height 78" when width is equal to or less than 30"
- Supports sash up to 140 lbs.

### COMMERCIAL HARDWARE OPTION

- European style Fapim Out System
- Handle rotation allows for sash lock, unlock and actuation
- Securely restricts and locks window open position
- Locking bar allows for synchronized locking in one motion
- Supports sash up to 280 lbs.
- Max casement width 48" and min casement width 23 ½"
- Max casement height 98"
- ADA compatible handle available

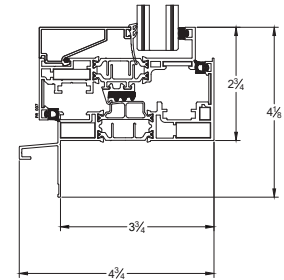
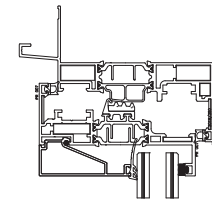
### FINISH OPTIONS

- Clear Anodized, Class I (standard)
- Bronze Anodized, Class I (standard)
- Kynar Paint (color matching available for commercial projects)
- Split Finish options for interior and exterior

### RATINGS & CERTIFICATION

- NFRC Certified Product
- .30 U Value or better to meet Title 24 compliance
- Performance Grade Rating PG60
- Acoustically Rated

Assembly Drawings



Encore Contemporary Operator



Fapim Out Operator

