



ALL WEATHER  
ARCHITECTURAL ALUMINUM

## SERIES 6200 HORIZONTAL SLIDING WINDOW SYSTEM

777 Aldridge Road | Vacaville, CA 95688 | 800.680.5800 | [www.allweatheraa.com](http://www.allweatheraa.com)

# SERIES 6200

## 3 1/8" HORIZONTAL SLIDING WINDOW SYSTEM

The Series 6200 Horizontal Sliding Window System is All Weather's newest, energy efficient window design. Featuring narrow sightlines and a contemporary aesthetic, the Series 6200 horizontal sliding window is ideal for residential, multi-family and commercial applications.

The Series 6200 Horizontal Sliding Window System meets Title 24 compliance using the Prescriptive Method, is commercially rated and delivers best in class STC ratings.

### FEATURES

- 3 1/8" Frame with mitered corners
- Max panel width 48", min panel width 18"
- Max panel height 84", min panel height 18"
- Max panel size 48" x 84"
- Maximum of 28 square feet total or 180 lbs.
- Thermally broken frame – Pour & Debridge system
- Extruded aluminum screen

### FRAME OPTIONS

- Nail on with optional block frame

### CONFIGURATIONS

- OX, XO and XOX
- Additional configurations coming soon

### GLAZING OPTIONS

- 1" OA insulated units – 1 1/4" OA triple glazed
- Marine glazed

### HARDWARE OPTIONS

- Amesbury Truth Positive Action Lock (PAL) in bronze or satin nickel finish
- Recessed finger pull
- Fapim Hockey rollers in single or double roller configuration depending upon weight of the panel
- Hockey rollers weight capacity 180 lbs.

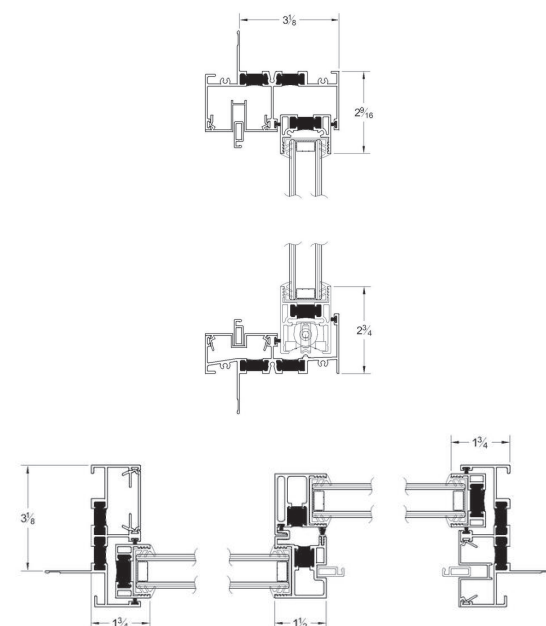
### FINISH OPTIONS

- Clear Anodized Class I (standard)
- Bronze Anodize Class I (standard)

### RATINGS & CERTIFICATION

- NFRC Certified Product
- Dual glazed unit will hit 0.31 U factor
- Triple glazed unit will hit 0.25 U factor
- CW Performance Class with a PG35 rating
- Acoustically Rated

Sliding Window Assembly



PAL Hardware



Fapim Hockey Roller



Recessed Finger Pull

